

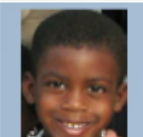
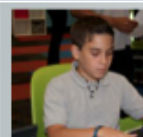


21ST CENTURY SCHOOLS BOND ADVISORY COMMITTEE MEETING SEPTEMBER 9, 2014



2014

21st Century Schools Bond Advisory Committee First Annual Report



APPROVAL OF ANNUAL REPORT

Miami-Dade County Public Schools
As of June 2014



Miami-Dade County Public Schools
As of June 2014



APPROVAL OF ANNUAL REPORT

- Since the August 25, 2014 meeting, based on input provided at the time and in consultation with the Committee Chair, the Annual Report was revised
- The revisions are as follows:
 - further explanation provided on basis for including two large projects in Year 1 (pg. 12)
 - expanded on SBE/MBE program and relationship to Year 2 projects (pg. 13)

APPROVAL OF ANNUAL REPORT

■ Revisions (cont'd.):

- included expenditure column for tables listing Year 1 and Year 2 projects (pgs. 14-17)
- included information on OEO staff qualifications (pg. 18) and added professional profiles to Appendices section
- added information on Procurement's 'HOW TO DO BUSINESS WITH M-DCPS' initiative (pg. 20) and included booklet in Appendices (starts on pg. 106)

APPROVAL OF ANNUAL REPORT

■ Revisions (cont'd.):

- added a new section titled 'New Policies & Compliance Procedures' (pg 23), as well as additional information on status of Disparity Study (pg. 24)
- added information on overall expenditures for program with further breakdown (pg. 26)
- added school addresses to the one-page Year 1 project summaries




APPROVAL OF ANNUAL REPORT

In addition to these revisions, the following responses were provided on this date to Ms. Adora Obi Nweze, President of the Miami-Dade Branch of the NAACP.

▪ Include CPM schedule in Report – CPM in construction typically refers to the Critical Path Method, which is most appropriate on a project by project basis rather than program-wide. Milestone schedules have been included in the Dashboard as projects are on deck each year which is a more suitable method of depicting project information to the public. Program-wide information as to when (schedule) projects are funded and funding amount is already available to the public at large on the GOB website

School Name	Actual (Year 1) 12/13	Actual (Year 2) 13/14	Actual (Year 3) 14/15	Actual (Year 4) 15/16	Actual (Year 5) 16/17	Actual (Year 6) 17/18
Ada Merritt K-8 Center		\$199,456				
Air Base Elementary School					\$3,522,730	\$3,522,730
Allapattah Middle School					\$3,522,730	\$3,522,730
Amelia Earhart Elementary School						
American Senior High				\$7,478,478		
Arcola Lake Elementary School				\$4,082,111		
Arthur and Polly Mays Conservatory of the Arts	\$2,224,490					
Arvida Middle School				\$3,599,956		
Auburndale Elementary School	\$2,441,947					
Avocado Elementary School	\$1,323,346					
Banyan Elementary School					\$2,971,570	
Barbara Goleman Senior High					\$3,360,520	
Barbara Hawkins Elementary School					\$2,028,277	
Barbara Hawkins Elementary School					\$766,303	
Bel-Aire Elementary School					\$3,702,563	
Ben Sheppard Elementary School				\$2,988,231		
Benjamin Franklin K-8 Center				\$7,072,177		
Bent Tree Elementary School		\$988,356				
Biscayne Elementary School	\$2,472,795					
Biscayne Gardens Elementary School			\$5,471,749			
Blue Lakes Elementary School					\$2,658,204	
Bob Graham Education Center		\$596,155				
Booker T. Washington Senior High					\$3,077,415	
Bowman Ashe/Doolin K-8 Academy	\$2,297,825					
Brentwood Elementary School				\$2,483,897		
Broadmoor Elementary School				\$1,435,668		
Broadmoor Elementary School				\$6,649,979		
Brownsville Middle School				\$3,401,572		
Bunche Park Elementary School		\$721,079				
Bunche Park Elementary School		\$7,500,000				
Calusa Elementary School		\$1,446,883				
Campbell Drive K-8 Center	\$1,528,390					
Campbell Drive Middle School		\$961,214				
Caribbean Elementary School	\$1,662,230			\$2,367,370		
Carol City Elementary School					\$3,386,333	
Carol City Middle School						
Carrie P. Meek/Westview K-8 Center		\$1,981,084				
Centennial Middle School				\$2,459,132		
Charles David Wyche, Jr.					\$3,341,283	
Charles R. Drew K-8 Center & Middle				\$7,901,237		
Charles R. Hadley Elementary School			\$3,377,656			
Christina M. Eve Elementary School			\$204,280			
Citrus Grove Elementary School				\$6,559,827		



PROJECT# 01303500

4801 - GERTRUDE EDELMAN/SABAL PALM EL

17101 NE 7 Avenue, North Miami Beach

School Board District 3

Dr. Martin S. Kap, Vice-Chair

North Region

Last Updated September 8, 2014

[GERTRUDE EDELMAN/SABAL PALM EL WEBSITE](#)


SCOPE

Replace windows; replace fire alarm; upgrade security camera system; replace flooring in selected areas; install new playground and new playground surface area; paint exterior and interior in selected areas; install new classroom technology.

GENERAL INFORMATION

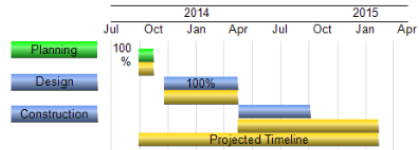
Project Type	Renovation
Project ID	01303500
Student Stations	0
Architect	Rodriguez Architects, Inc.
Contractor	T & G Constructors
Delivery Method	CM@ Risk Msc.
Small Business Participation	---
Minority & Women Business Participation	---
Status	Construction

[View Project Photo Gallery](#)



SCHEDULE

Milestone	Projected	Actual
Start Planning	08/29/2013	08/29/2013
Complete Planning	10/01/2013	10/01/2013
Start Design	10/23/2013	10/23/2013
Complete Design	03/31/2014	04/01/2014
Start Construction	04/01/2014	04/02/2014
Complete Construction	01/30/2015	
Occupancy	03/01/2015	



FINANCIALS

Budget	\$2,002,922.00
Expended	\$1,991,111.45
Balance	\$11,810.55

Budget Availability

99%

1%

% Balance

% Expended

Note: District-wide expenditures through August 20, 2014 including technology, total \$57,288,376. Additional District-wide encumbrances total \$63,983,862

6



APPROVAL OF ANNUAL REPORT

Response to summary of items provided by Miami-Dade Branch of the NAACP (Cont'd.)

▪ **Revenue and Expenditure Report and Project Summary Report (Master and by District)**– this information is already included in the Report for all active projects (Year 1 and Year2). Project funding (revenues) and project expenditures are also available for Year 1 and Year 2 projects on the public Dashboard. Schools scheduled for a project in Years 3, 4 or 5 also have access through their own school website to that information through a ‘Dashboard’ button. Project detail is available Program-wide, by Board District, by Region, by Municipality and by Type.

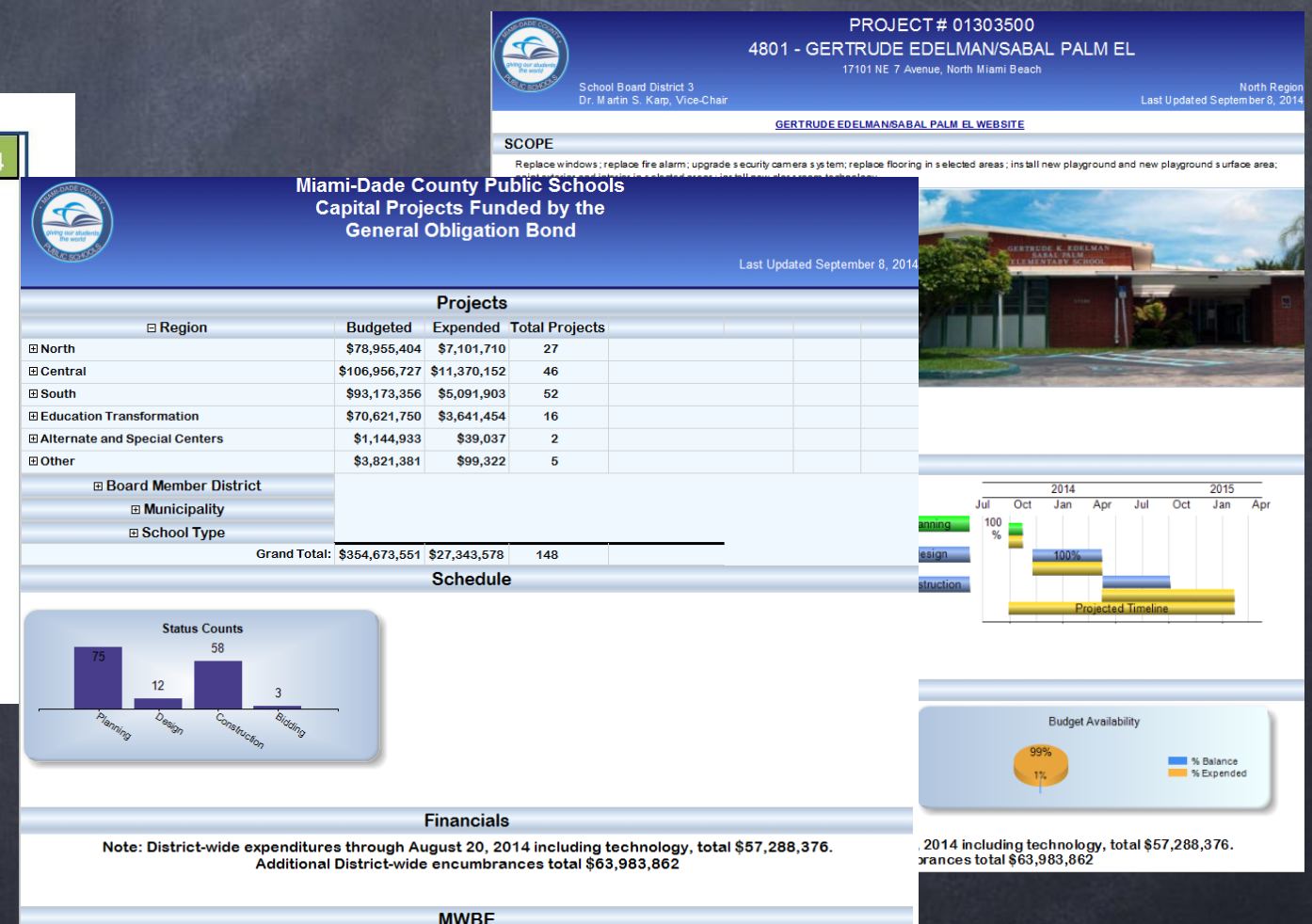
21st Century Schools Bond Advisory Committee – First Annual Report

2014

GO Bond Year 1 Project Listing (As of First Quarter, 2014)

Year 1 GO Bond Schools				
Region	School	Project Budget	Status	Expenditures
Central	Agenoría S. Paschal/Olinda Elementary	\$ 1,743,384	Design	\$ 55,761.41
South	Arthur & Polly Mays Conservatory of the Arts	\$ 2,224,490	Design	\$ 24,603.69
South	Ashe/Doolin K-8 Center	\$ 2,297,825	Design	\$ 58,780.22
Central	Auburndale Elementary	\$ 2,441,947	Design	\$ 31,781.73
South	Avocado Elementary	\$ 1,323,346	Design	\$ 52,280.94
North	Biscayne Elementary	\$ 2,472,795	Design	\$ 88,064.67
South	Campbell Drive K-8	\$ 1,528,390	Design	\$ 65,421.19
South	Caribbean Elementary	\$ 1,662,230	Design	\$ 31,593.28
ETO	Citrus Grove Middle	\$ 1,554,993	Design	\$ 92,554.52
South	Colonial Drive Elementary	\$ 2,001,862	Design	\$ 31,366.61
Central	Coral Park Elementary	\$ 2,082,540	Design	\$ 44,646.41
South	Dorothy M. Wallace Cope Center	\$ 1,132,582	Design	\$ 17,175.11
South	Dr. Edward L. Whigham Elementary	\$ 1,936,827	Design	\$ 24,433.34
South	Dr. Henry E. Perrine Academy of the Arts	\$ 1,563,275	Design	\$ 30,637.84
North	Dr. Michael M. Krop Senior High	\$ 1,335,935	Design	\$ 44,193.85
ETO	Dr. Robert B. Ingram Elementary	\$ 1,875,232	Design	\$ 50,709.03

EXCERPT OF FINANCIAL DETAIL IN REPORT



SCREEN SHOTS OF PROGRAM WIDE AND FINANCIAL DETAIL IN DASHBOARD



APPROVAL OF ANNUAL REPORT

Response to summary of items provided by Miami-Dade Branch of the NAACP (Cont'd.)

▪ Compliance with Superintendent's Goals and Objectives ('A Promise Made, A Promise Kept') – the original guiding principles continue to guide and inform the District's actions and the Board's decisions. The list does not provide specific instances of non-compliance.

▪ SBE/MBE and MWBE Goals proposed and achieved – 66 Year 1 and 9 Year 2 projects with values under \$2M did not include SBE/MBE or MWBE goals as policies and procedures were not in place at the time the firms (both architects and contractors) were commissioned by the Board. That notwithstanding, several of those firms and their respective consultants or sub-contractors have SBE or MWBE certification with the District.

The 2 large Year 1 projects (MAST and Miami Norland Senior replacement) have SBE and M/WBE participation goals. Compliance will be on-going through the life of the projects.

47 projects in Year 2 were specifically set aside for SBE firms and an additional 7 projects were set aside for MBE firms. Several of those firms also hold M/WBE certification with the District.

If the Committee desires, a summary of the various firms' certifications can be added to the Report under the Appendices.



APPROVAL OF ANNUAL REPORT

Response to summary of items provided by Miami-Dade Branch of the NAACP
(Cont'd.)

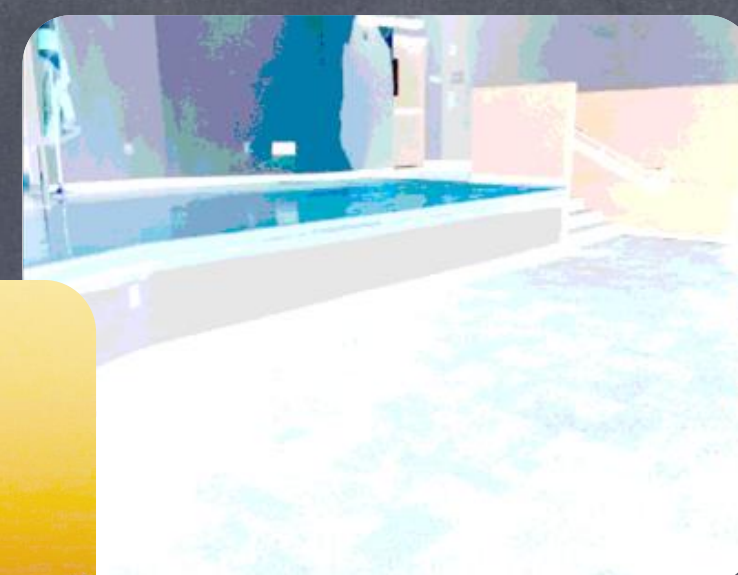
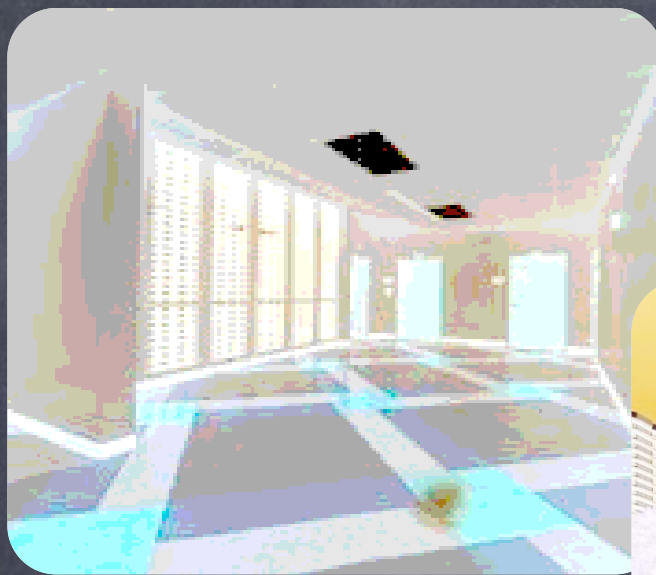
- Contract awards and expenditures paid the consultants and contractors – if the Committee desires, additional detail by vendor for the period covered in the Report (through March 31, 2014) can be included in the Appendices.
- Diversity and inclusion of GOB staff – we are unclear as to what is being requested.



APPROVAL OF ANNUAL REPORT

ACTION REQUESTED:

1. DETERMINE WHETHER IT DESIRES TO INCLUDE IN THE APPENDICES:
 - a) ADDITIONAL DETAIL ON EXPENDITURES IN THE APPENDICES AS FURTHER DISCUSSED IN PRIOR SLIDES, AND
 - b) BREAKDOWN OF SBE/MBE AND M/WBE CERTIFICATIONS FOR FIRMS COMMISSIONED BY THE BOARD AND GOALS WHERE APPLICABLE,
1. APPROVE THE ANNUAL REPORT WITH/WITHOUT MODIFICATIONS, AND
2. FORWARD ANNUAL REPORT TO THE SCHOOL BOARD



UPDATE ON GOB PROJECTS YEARS 1, 2 AND 3

GOB PROJECT UPDATE

YEAR 1 (68 PROJECTS)	YEAR 2 (79 PROJECTS)
57 in construction	54 under \$1M have been assigned to new SBE/MBE architects and contractors
11 in bidding, plan review/permitting or design	9 with values between \$1M and \$2M have been assigned to A/EPC and contractors
	16 over \$2M are at different stages

Playground Improvements

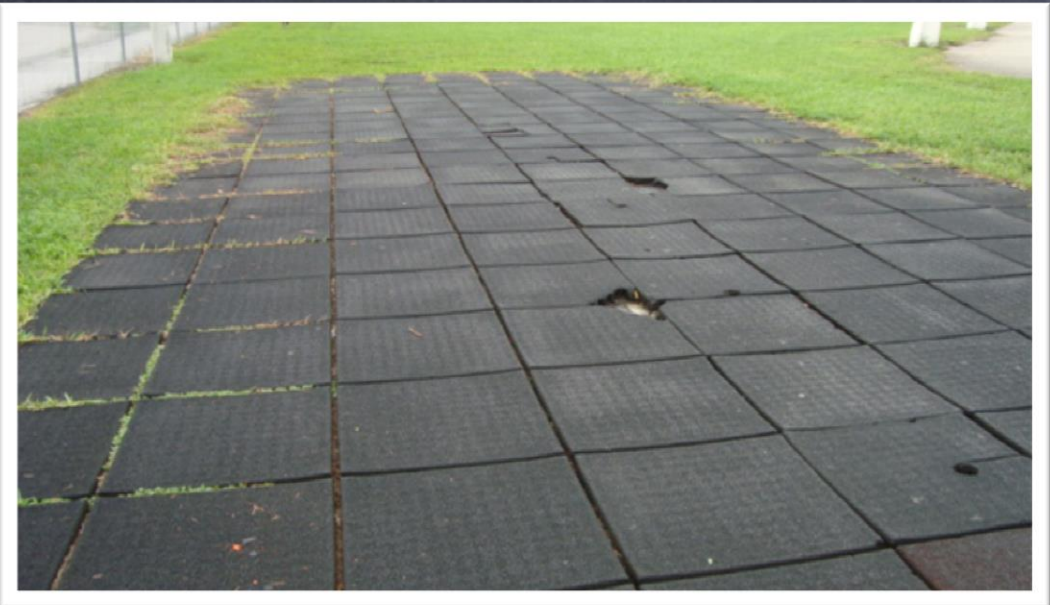
Treasure Island Elementary



W.J. Bryan Elementary



Playground Improvements



Virginia A. Boone/Highland Oaks Elementary

Portable Removal and Field Restoration

Meadowlane Elementary





Roofing, Painting, Site Improvements

Miami Springs Senior



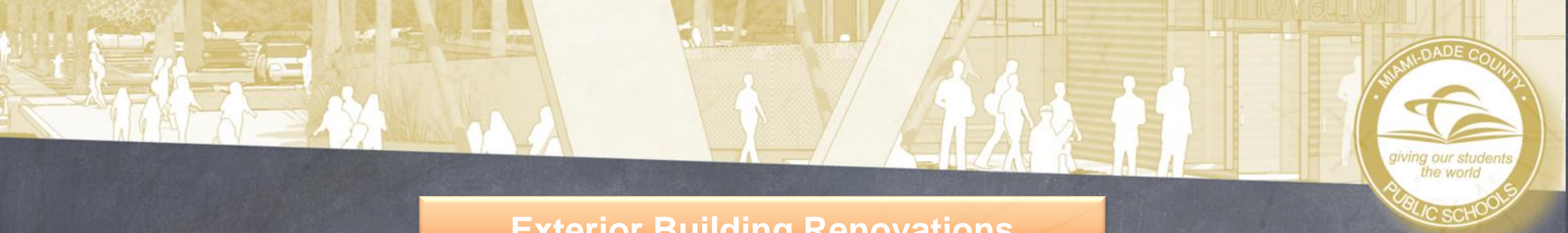
Jan Mann Opportunity School



Auburndale Elementary



Miami Lakes Educational Center



Exterior Building Renovations



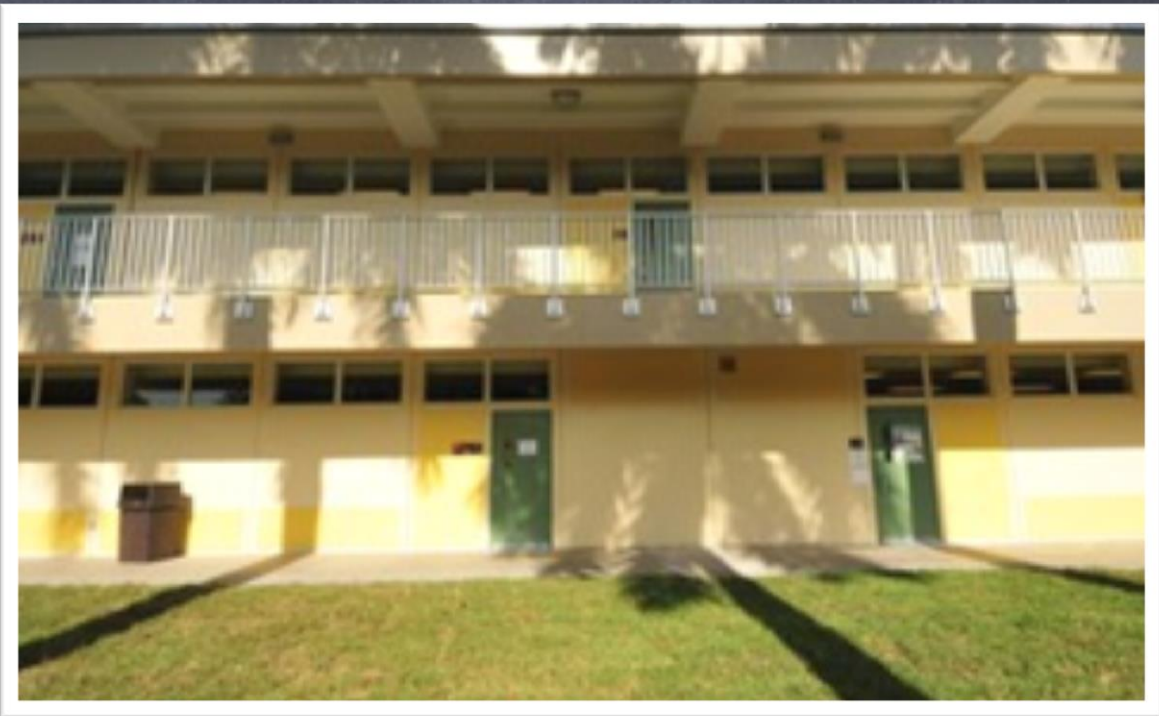
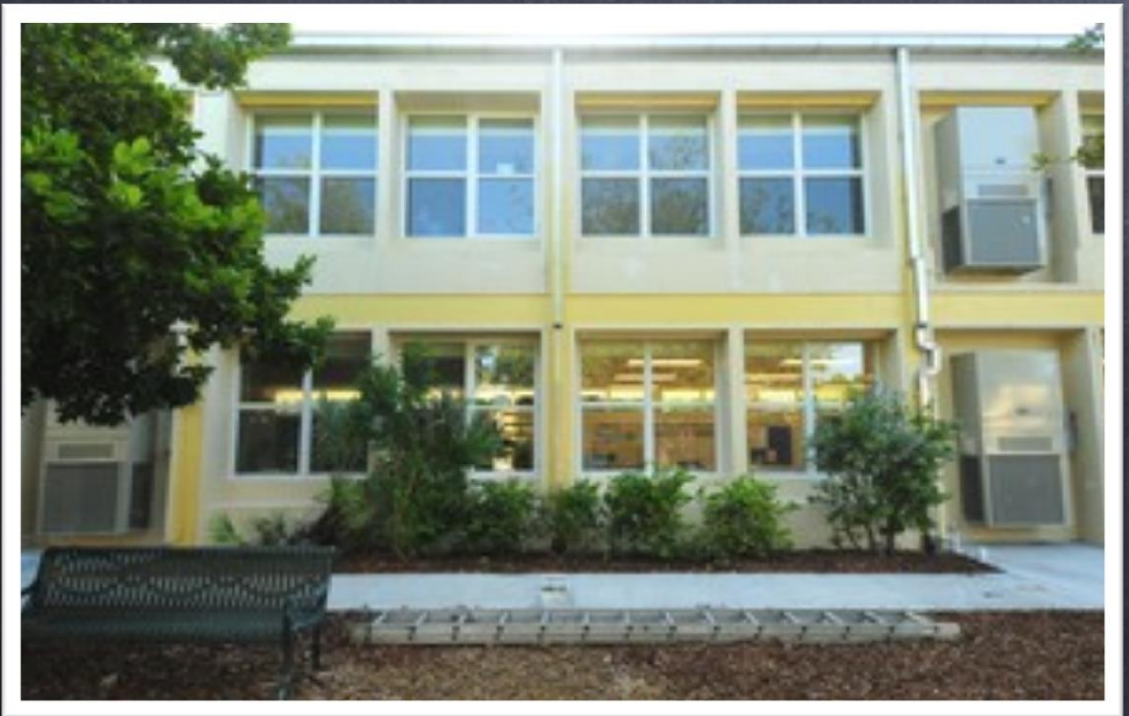
Gertrude Edelman/Sabal Palm Elementary





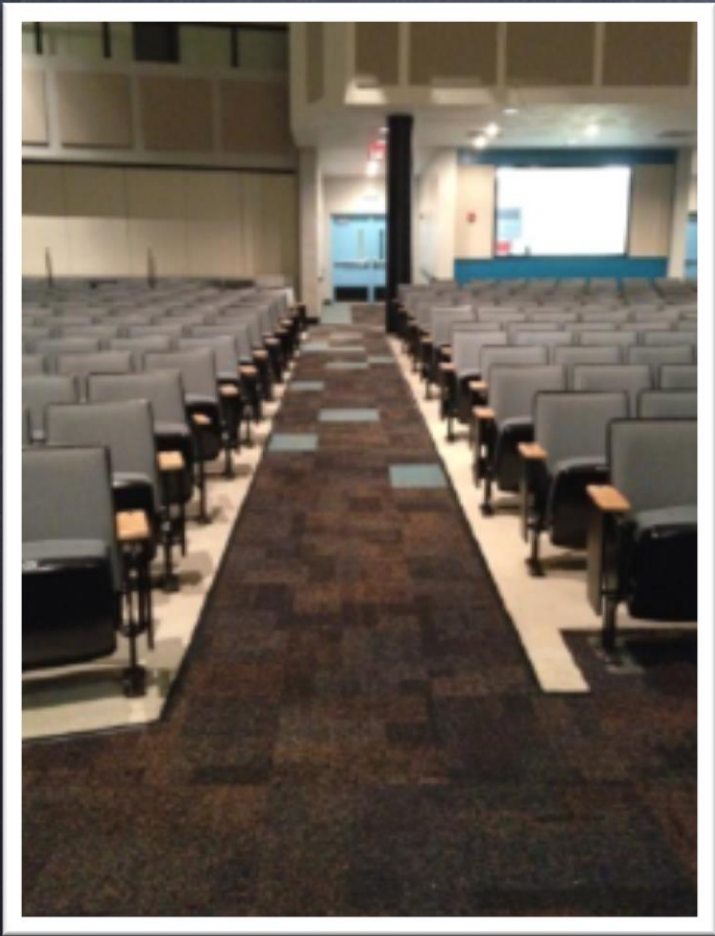
Key Biscayne K-8

Exterior Building Renovations

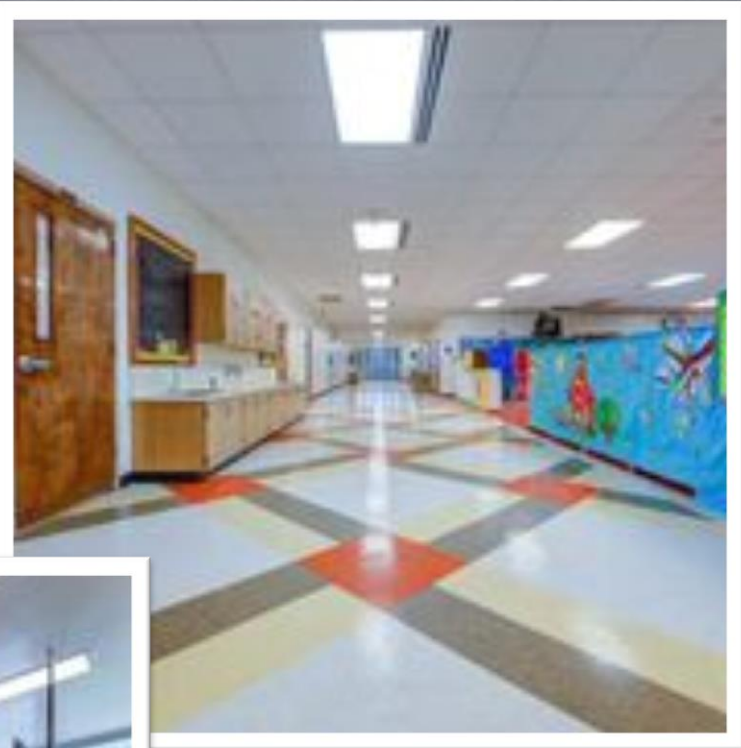




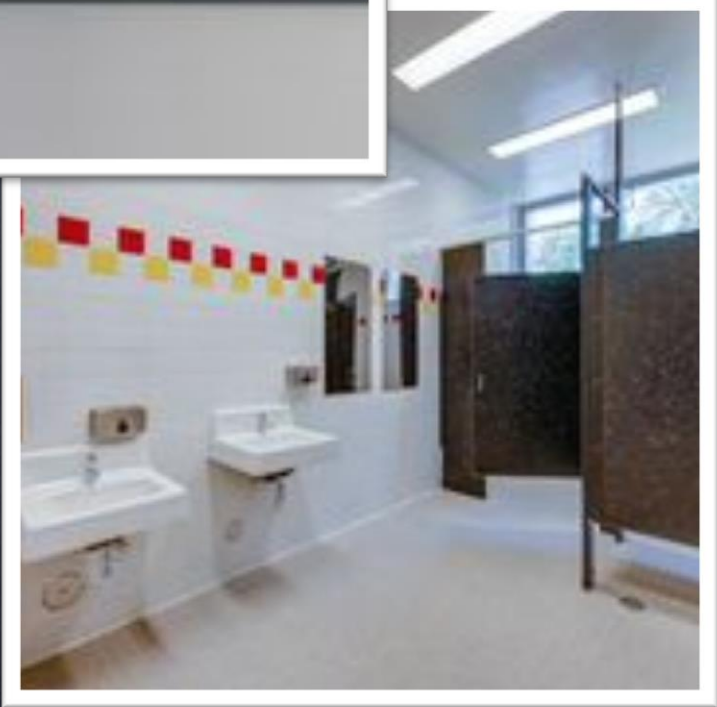
Interior Building Renovations



Miami Lakes Educational Center



Shenandoah Elementary





GOB PROJECT UPDATE

YEAR 3 (54 Projects)

7

Under \$2M in pre-design, fall 2014

47

Over \$2M in A/E contractor selection, 1st quarter 2015

ADDITIONAL PROJECTS IN PROGRESS

107

Smaller accelerated projects (playgrounds, portable removal, roofing, air conditioning)

BY CALENDAR YEAREND

**ALL 68 YEAR 1 PROJECTS
IN CONSTRUCTION**

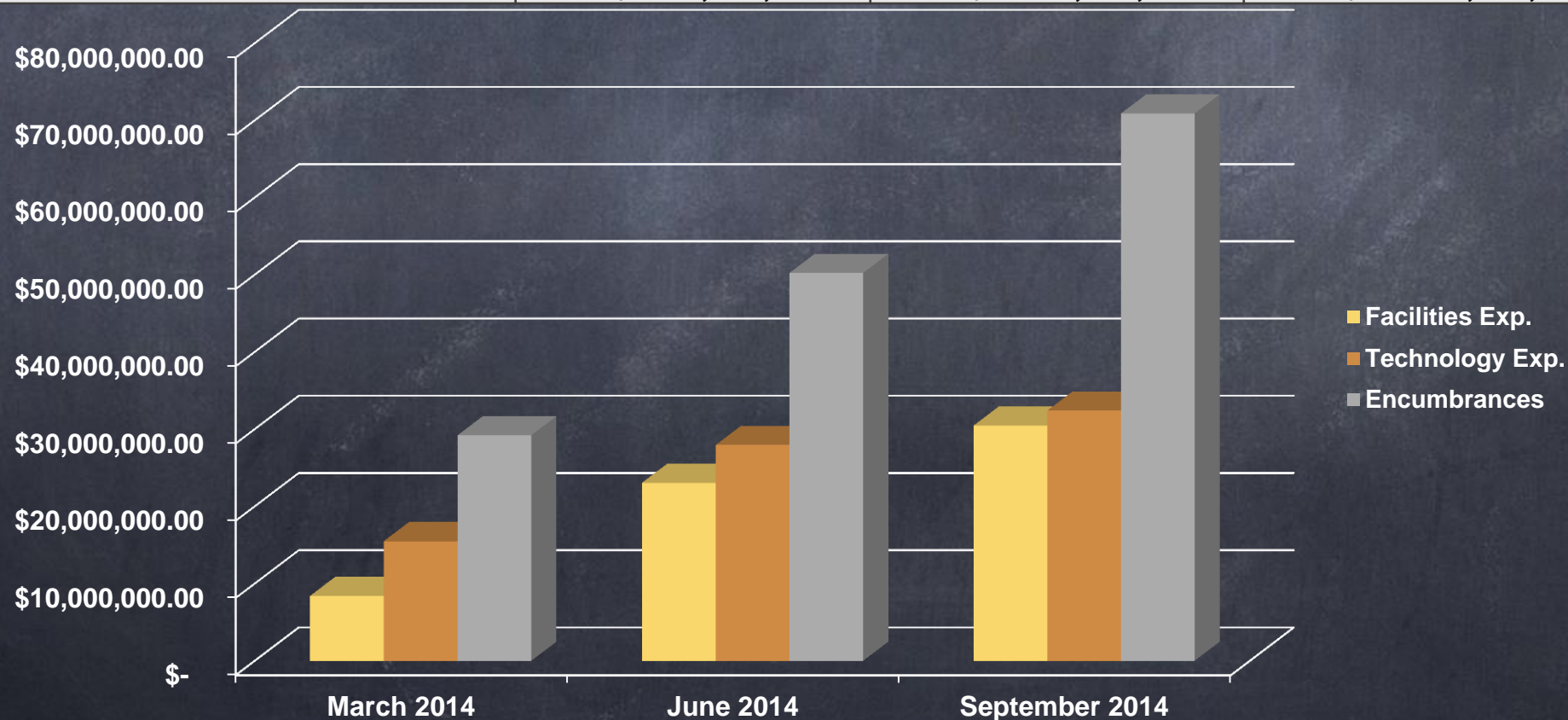
**YEAR 2 PROJECTS IN
DESIGN OR
CONSTRUCTION**

**ALL 107 ACCELERATED PROJECTS
COMPLETED OR IN CONSTRUCTION
(NOTE: AS OF AUGUST 2014, 42 WERE
COMPLETED, 26 WERE IN CONSTRUCTION
AND THE BALANCE WERE IN DESIGN OR
BIDDING)**

GOB PROJECT UPDATE

GOB Expenditures Tracking (through 9-5-2014)

GOB PROGRAM			
Transaction Category	March 31, 2014	June 30, 2014	September 5, 2014
Facilities Exp.	\$ 8,403,985.97	\$ 23,040,606.87	\$ 30,465,994.52
Technology Exp.	\$ 15,496,502.33	\$ 27,937,723.51	\$ 32,399,985.68
Total Expenditures	\$ 23,900,488.30	\$ 50,978,330.38	\$ 62,865,980.20
Total Encumbrances	\$ 29,201,995.30	\$ 50,222,545.94	\$ 70,888,460.02





TECHNOLOGY UPDATE

- President Obama Broadband Initiative (ConnectEd) providing fast internet to schools and libraries is scheduled for completion in 2018
- February 2014 MDCPS met this goal with over
 - 20,000 access points
 - 45,000,000 square feet of space made ready for wireless in over 360 facilities

HOW DO WE SUPPORT 400,000 CONNECTED USERS?

- Infrastructure upgrades:
 - Increase transfer speed from 1 gigabit of information per second (GBPS) to 10 GBPS
 - Upgraded routers and switches within schools to accommodate the increased transfer speed
 - Increase speed into the schools with new and faster lines

HOW DO WE SUPPORT 400,000 CONNECTED USERS?

- What does this mean?
 - One gigabit = 1 billion bits *per second of information*
 - District wireless speed = 10 billion bits per second of information is traveling through our district
 - We have fast internet

Classroom Technology *UPDATE: January 2014*

Interactive Whiteboards and Projectors



February 2014

Installation begins



1st Quarter 2015

Installation completed



310 & 10,000

Schools & classrooms impacted

GOB Funds



Classroom Technology *UPDATE: Aug/Sept 2014*

Interactive Whiteboards and Projectors



February 2014

Installation begins

May 2014



1st Quarter 2015

Installation completed

August 2014 - nearly complete



310 & 10,000

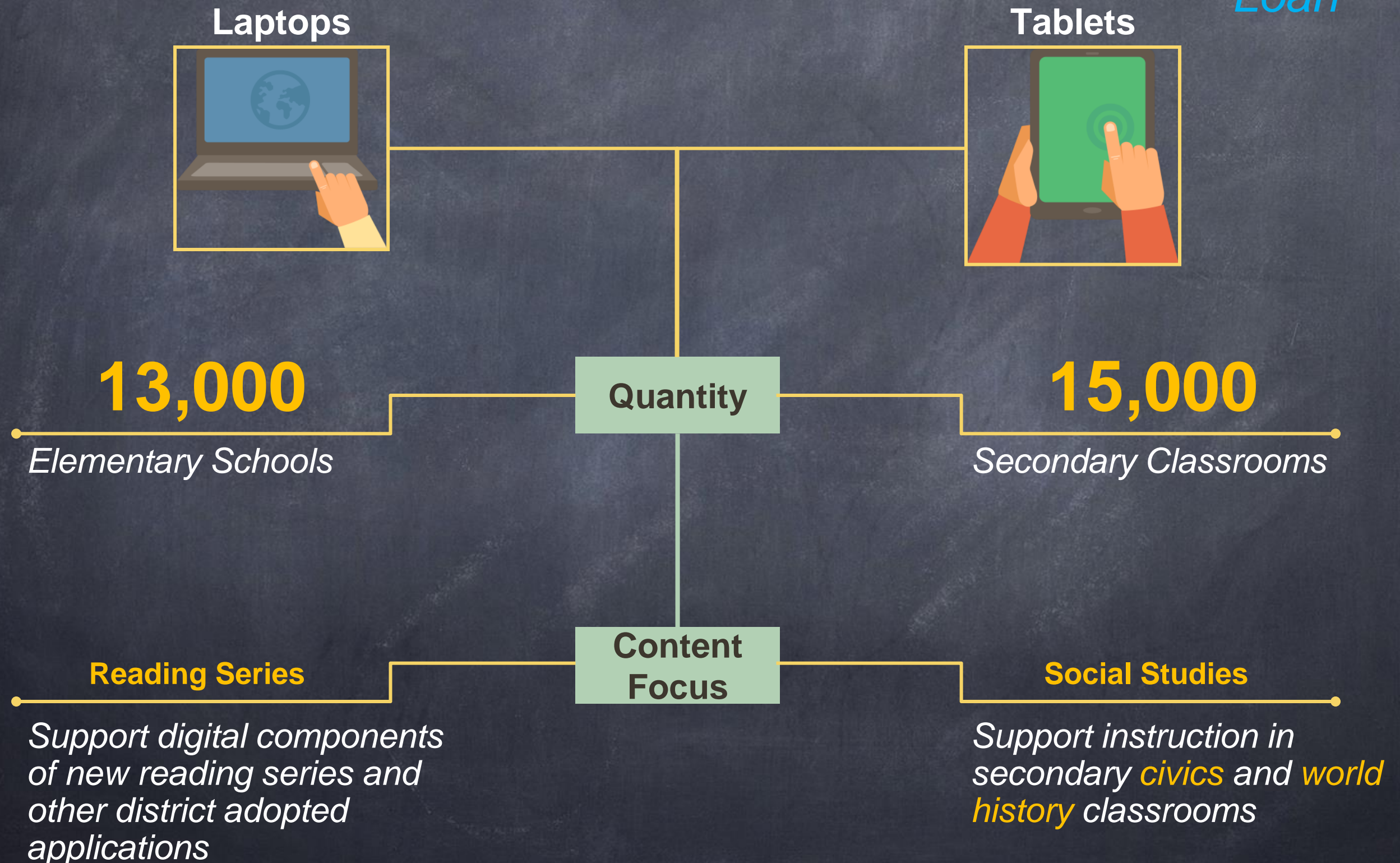
Schools & classrooms impacted

342 & 11,000

Schools & classrooms impacted

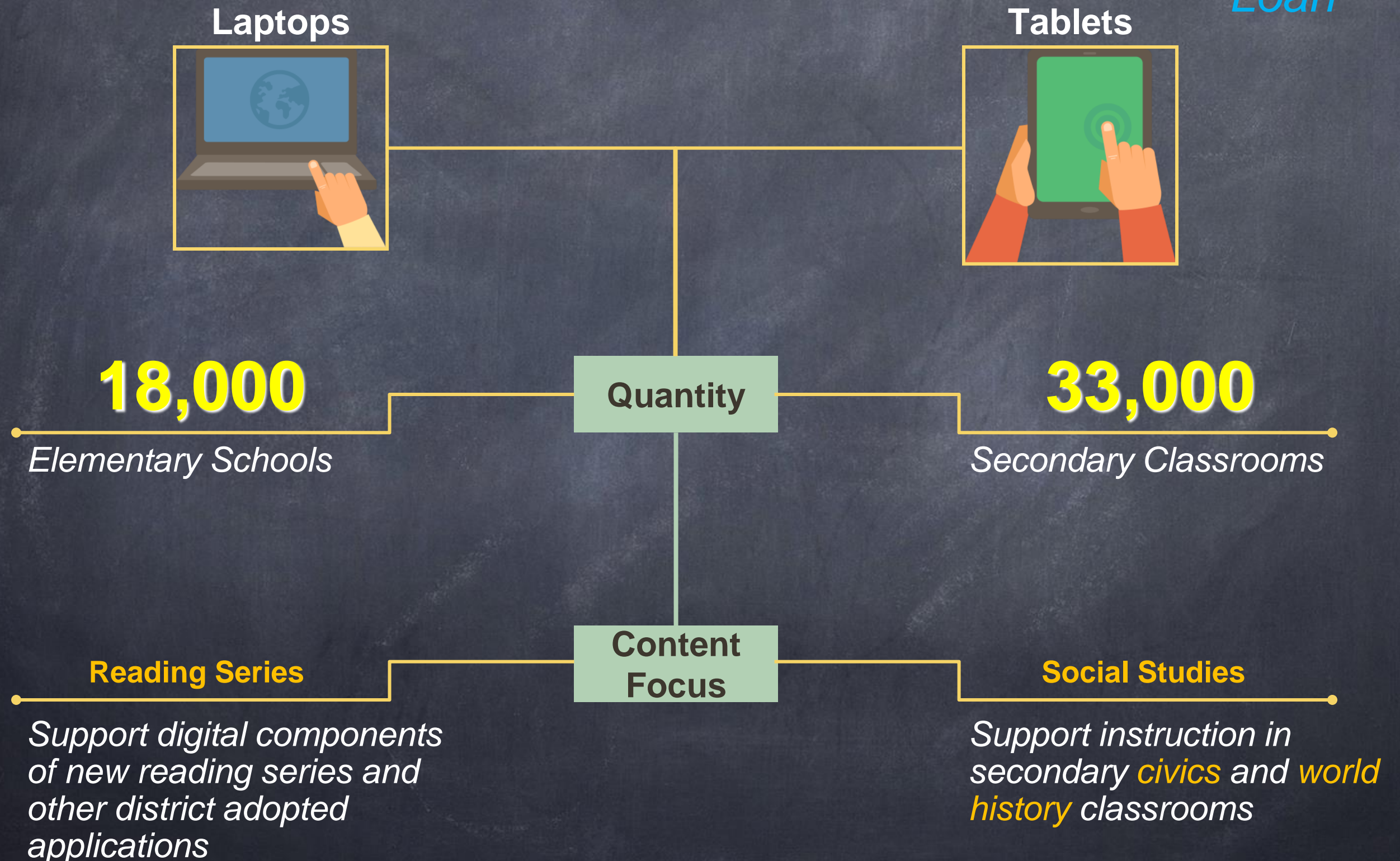
Mobile Device Initiative *Update: Phase 1 – April 2014*

*Non GOB Funds - Bank of America
Loan*



Mobile Device Initiative *Update: Phases 1&2 – Aug/Sept 2014*

*Non GOB Funds - Bank of America
Loan*





SBE/MBE PARTICIPATION IN GOB THEIR EXPERIENCE TO DATE

- as discussed at previous Committee meetings, projects with construction values of \$1M and under were reserved for SBE and MBE architects and contractors
- through a qualifications based process, the Board commissioned 11 SBE architects, 9 SBE contractors, 4 MBE architects and 7 MBE contractors



SBE/MBE PARTICIPATION IN GOB THEIR EXPERIENCE TO DATE

- to date, all Year 2 small projects have been assigned:
 - 7 projects with construction values of \$200K or less are assigned to 7 MBE architect and contractor teams
 - 47 projects with construction values between \$200K and \$1M are assigned to 13 SBE architect and contractor teams



SBE/MBE PARTICIPATION IN GOB THEIR EXPERIENCE TO DATE

- since most of the selected firms are first-timers with the District, the focus is on making the experience both meaningful and productive. Efforts undertaken to date include:
 - professional development opportunities (e.g. recent free SREF training)
 - joint site visits to projects with interdisciplinary District staff team
 - quarterly (informal) chats to gather input and provide refreshers

SBE/MBE PARTICIPATION IN GOB THEIR EXPERIENCE TO DATE

- the first 'quarterly chat' took place on September 5;
- a total of 21 SBE and MBE firms were represented
- a number of these firms were invited to attend today's meeting and provide their take on the program thus far





ADVISORY COMMITTEE'S 'SCHOOL ADOPTION PROGRAM'

- as the GOB program implementation rollout and the number of projects expands, there is a unique opportunity for the Committee members to experience the transformation first-hand
- to facilitate this process without making it overwhelming, staff recommends that each Committee member take 1 or 2 projects under his/her wing and follow the progress from groundbreaking through ribbon-cutting



ADVISORY COMMITTEE'S 'SCHOOL ADOPTION PROGRAM'

- this will accomplish two main purposes:
 - bring Committee members into direct contact with the stakeholders (students, faculty, project architects and contractors and relevant communities), and
 - allow Committee members to become fully familiarized with the many facets of project delivery
- if endorsed by the Committee, staff will provide a list of projects in Year 2 and Year 3 not yet started and thus able to provide the full beginning to end experience

ACTION REQUESTED:
ENDORSE COMMITTEE MEMBER PARTICIPATION IN
'SCHOOL ADOPTION PROGRAM'



Coffee with the Community:
A Conversation with the OEO Director

Please join the Director of the Office of Economic Opportunity (OEO) and members of the business community in an informative discussion.

Learn about the new opportunities available to small businesses, and find out more on how to become pre-qualified and certified with M-DCPS.

ATTENTION LOCAL VENDORS

MIAMI-DADE COUNTY PUBLIC SCHOOLS
OFFICE OF ECONOMIC DEVELOPMENT
presents

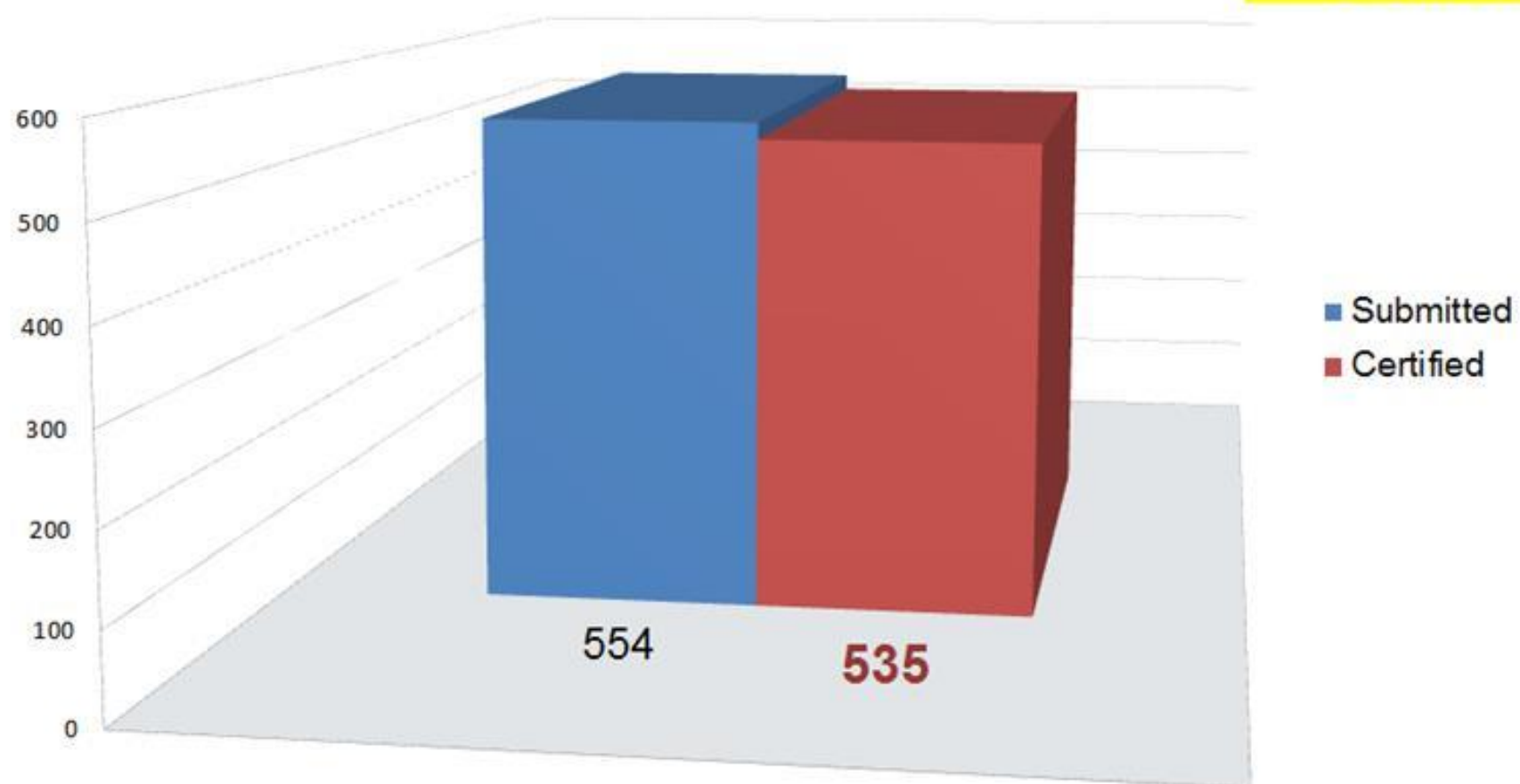
**How To Do Business With
Miami-Dade County Public Schools**

GOB PROGRAM ECONOMIC OPPORTUNITY

SBE CERTIFICATIONS

SBE CERTIFICATION CHART 2013/2014

Total SBE Certification Rate
96.57% \approx 97%





SBE CERTIFICATIONS

- since April 2013, the OEO has hosted and participated in various events (64 total) to engage, promote and mentor small and minority businesses

- events have included:

10 *Radio, Television & Newspaper*

2 *Prequalification Events*

57 *Community Outreach Events*



COMMUNITY OUTREACH

Media	Associations	Agencies
<ul style="list-style-type: none">• Radio EKOL• Miami Times• Diario Las Americas• Haiti Journal• South FL Times• Daily Business Review• KOZE FANM Radio	<ul style="list-style-type: none">• Hialeah Chamber of Commerce• Spanish American League Against Discrimination• National Association of Women in Construction• Minority Chamber of Commerce• Miami-Dade Chamber of Commerce• Aventura Marketing Council• Doral Business Council• NAACP• Latin American Business Association• South Florida Minority Supplier Development Council• Haitian American Chamber of Commerce	<ul style="list-style-type: none">• U.S. Small Business Administration• Miami-Dade County• Miami-Dade College• Broward College• Broward County School Board• Palm Beach County School Board• Palm Beach State College• Miami-Dade Expressway Authority



COMMUNITY OUTREACH – DISPARITY STUDY UPDATE

- **School Board Workshop – October 2014**
- **General Obligation Bond Oversight Committee – Special Called Meeting in October 2014**
- **Small Business Enterprise Advisory Committee – October 16, 2014**
- **Community At-Large Workshop – October 2014**
- **Final Presentation to School Board on Final Disparity Study Report – November 2014**
 - *Participants at each meeting will include the Board Attorney, Chief Auditor, Economist and MGT of America.*



21ST CENTURY SCHOOLS BOND ADVISORY COMMITTEE NEXT MEETING: DECEMBER 9, 2014